

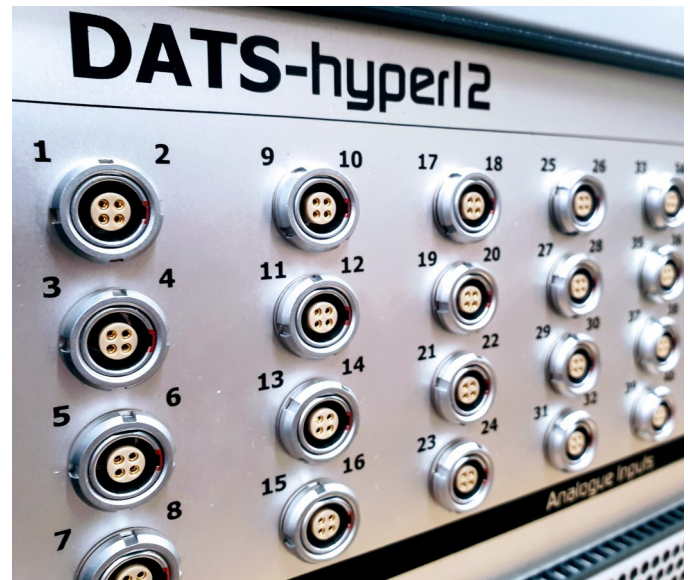
DATS-hyper 12



Data Acquisition System

Key Benefits

- **Accurate, repeatable measurements**
- **High channel counts**
- **Portable or rack-mounted**
- **Simple capture & application software**
- **Stack Hyper12's for higher channel counts**
- **Flexible measurement options**



The DATS-hyper12 is the high channel count member of the Prosig DATS data acquisition system family. The unit is available in portable or rack-mount form and a single system can support 96 high speed analogue inputs.

Units can be stacked to expand the system to over 1000 channels. Various input options are available. These include high speed analog (for microphones & accelerometers), thermocouple, strain gauge, precision tachometer measurement, digital I/O, CAN-bus, GPS and analog output. Each option is complete with programmable signal conditioning, which is controlled by the DATS software.

SYSTEM

Inputs	Single unit: Up to 92 channels (plus tachos) Stacked units: >1000 channels
Maximum sampling rate	Up to 400k samples/sec/channel
Resolution	24 bit
Communications	Ethernet (Gigabit)(Plus version) USB
Multi Rate Sampling	Multiple sampling rates can run concurrently on separate cards
I/O Options	See over

ENVIRONMENT & GENERAL

Operating temperature	0°C to 40°C (32°F to 104°F)
Humidity	95% RH, non-condensing
Supply voltage	External 10-36V DC (e.g. vehicle battery) AC mains (adapter supplied)
Expansion	Stackable/Interconnectable Distributed by Ethernet and USB
Dimensions (H x W x D)	185mm x 450mm x 400mm 7.3" x 17.7" x 15.7"

TYPE OF SENSORS

Measurement	Vibration	Shock
	Acoustics	Impact
	Displacement	Torque
	Strain	Position
	Tachometers	Rotary Encoder
	Force	Temperature
	Load	Pressure
	Proximity	Photoelectric
	Load	CAN-Bus
	Other	Any suitable IEPE, charge, temperature, bridge, or powered sensor

www.prosig.com

Tel UK: +44 (0) 1329 239925

sales@prosig.com

Tel USA: +1 847-228-0985

prosigusa@prosig.com

DATS-hyper12

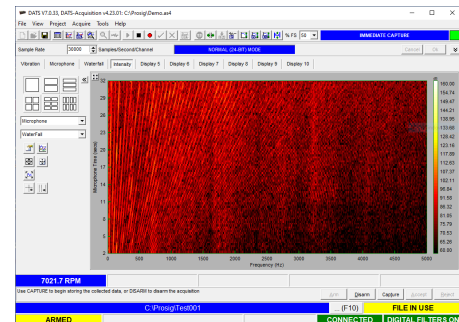
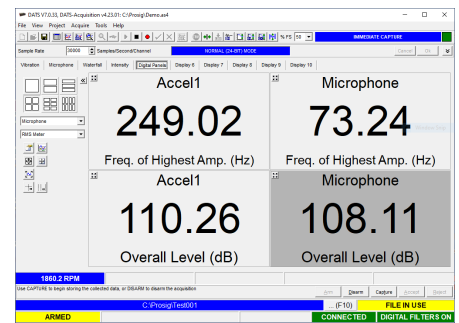
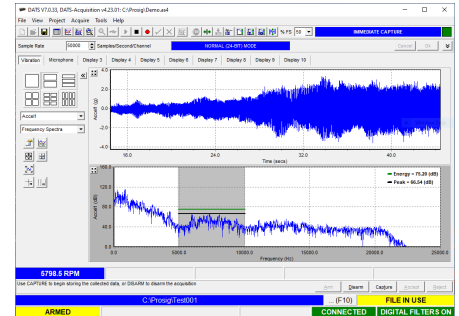


Data Acquisition System

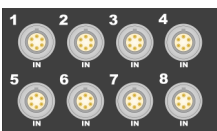


The DATS-hyper12 has 12 slots for measurement modules

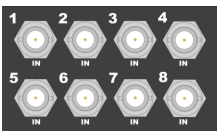
Powerful, yet simple data capture



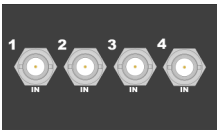
DATS-hyper12 can be configured with up to twelve modules from the measurement card range



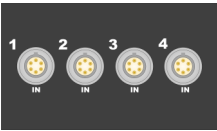
8512
8 channel ADC (IEPE & Direct) + Tacho



8514
8 channel ADC (IEPE, Direct & Bridge) + Tacho



8502
4 channel ADC (IEPE, Direct & TEDS) + Tacho



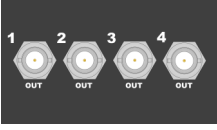
8504
4 channel ADC (IEPE, Direct, TEDS & Bridge) + Tacho



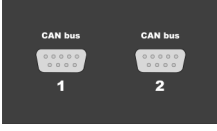
8508
8 channel Thermocouple



8520
4 channel Advanced Tacho



8524
2 or 4 channel DAC & Digital I/O



8540
Dual channel CAN-Bus



Prosig Ltd
Link House, High St
Fareham, Hampshire
PO16 7BQ
United Kingdom

UK: +44 (0) 1329 239925
sales@prosig.com
USA: +1 847-228-0985
prosigusa@prosig.com

[linkedin.com/company/prosig](https://www.linkedin.com/company/prosig)
[facebook.com/prosig](https://www.facebook.com/prosig)
[youtube.com/user/TheProsig](https://www.youtube.com/user/TheProsig)
[@prosig on Twitter](https://twitter.com/prosig)



Prosig maintains a policy of continuous product development and improvement. Specifications may be subject to change without prior notice and shall not form part of any contract.

