

DATS-P8012

Rugged, mobile 8 to 24 channel, 24-bit data acquisition system

CMTG.COM

Accurate, repeatable measurements

Simple capture & application software

Stack for higher channel counts

Entry level . Expandable to 24 channels

Expansion for DATS-tetrad/hyper12

The P8012 supports up to 24 high speed analog inputs plus two tachometer inputs. Units can be stacked to expand the system up to 96 channels. Various input options are available including high speed analog (for microphones & accelerometers), thermocouple, strain gauge, precision tachometer measurement, digital I/O, CAN and GPS. An analog output option is also available. Each card is complete with programmable signal conditioning, which is controlled by the DATS software.

Maximum sampling rate is 300k samples/sec/channel (24-bits) and 800k samples/sec/channel (16-bits). Data integrity is assured with a dynamic range of 102dB and a -120dB noise floor. Multi-band support enables synchronized measurement of low frequency vibration, high frequency acoustics and strain.

With a 12V DC power supply and only transducers to connect the integrated electronics of the P8012 guarantee high quality results every time.

SYSTEM

Inputs	Up to 24 channels (plus tachos)
Maximum sampling rate	Up to 300k samples/sec/channel (24-bit) Up to 800k samples/sec/channel (16-bit)
Resolution	24 bit
Communications	USB Ethernet (when connected to DATS-tetrad or DATS-PROLOG system)
Multi Rate Sampling	Multiple sampling rates can run concurrently on separate cards
I/O Options	See over

ENVIRONMENT & GENERAL

Operating temperature	0°C to 40°C (32°F to 104°F)
Humidity	95% RH, non-condensing
Power usage	Dependent on configuration
Shock and vibration	Suitable for mobile use (7g rms)
Supply voltage	External 10-36V DC (e.g. vehicle battery) AC mains (adapter supplied)
Expansion	Stackable/Interconnectable
Dimensions (H x W x D)	50mm x 290mm x 270mm 2.0" x 11.4" x 9.4"
Weight	Dependent on configuration

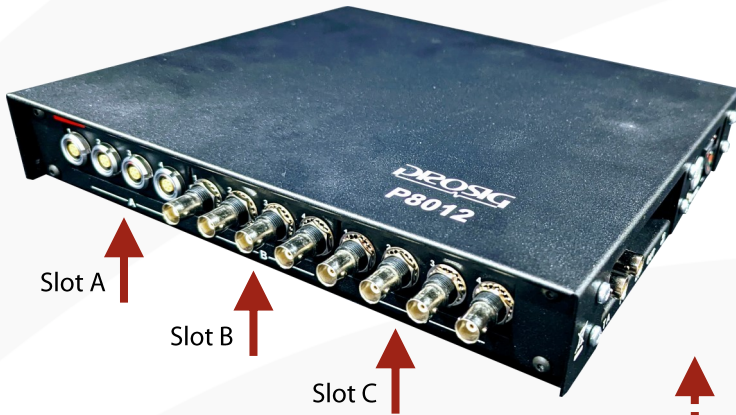
TYPE OF SENSORS

Measurement	Vibration	Shock
	Acoustics	Impact
	Displacement	Torque
	Strain	Position
	Tachometers	Rotary Encoder
	Force	Temperature
	Load	Pressure
	Proximity	Photoelectric
	Load	CAN-Bus
	Other	Any suitable IEPE, charge, temperature, bridge, or powered sensor

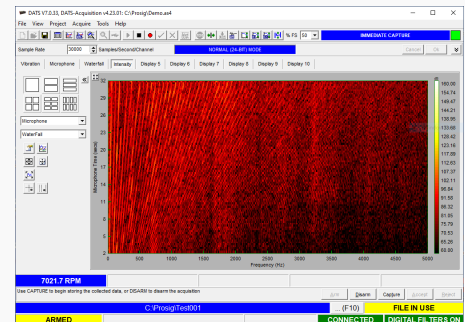
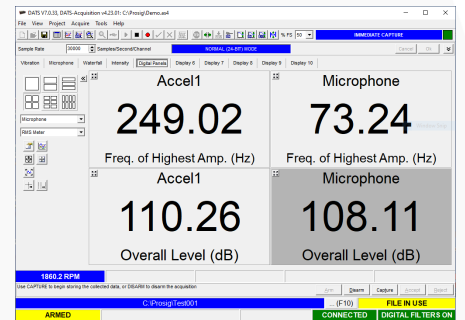
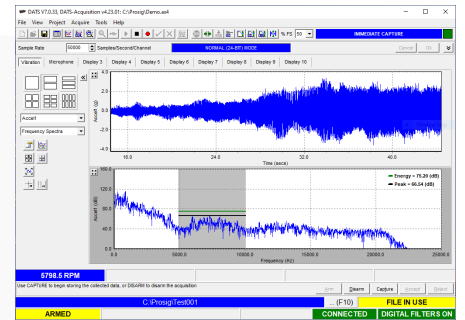


DATS-P8012

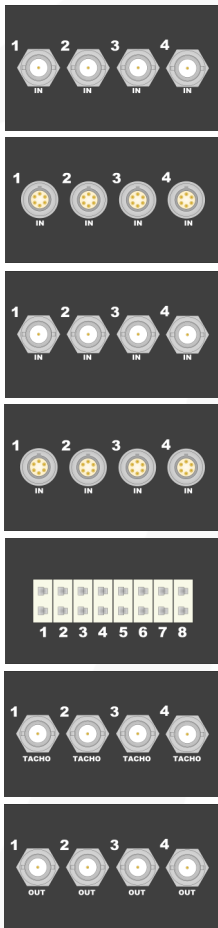
Rugged, mobile 8 to 24 channel, 24-bit data acquisition system



Powerful, yet simple data capture



DATS-P8012 can be configured with up to four modules from the measurement card range



8412
8 channel ADC (IEPE & Direct) + Tacho

8414
8 channel ADC (IEPE, Direct & Bridge) + Tacho

8402
4 channel ADC (IEPE, Direct & TEDS) + Tacho

8404
4 channel ADC (IEPE, Direct, TEDS & Bridge) + Tacho

8408
8 channel Thermocouple

8420
4 channel Advanced Tacho

8424
2 or 4 channel DAC & Digital I/O

Specifications may be subject to change without prior notice.

V2.00 18-Nov-2022 Copyright © Prosig Ltd



Link House, High Street
Fareham, Hampshire
PO16 7BQ
United Kingdom
sales@prosig.com



UK: +44 (0)1329 239925
USA: +1 847-228-0985
France: +33 (0)130 751507
Italy: +39 0331 178 5834

