

DATS-CANetic

CAN-BUS Logging System for DATS

CAN 2.0A, CAN 2.0B, CAN-FD, ISO1198-2

SAE J1979 OBD-II PIDs support

Seamless integration with analog data

Realtime CAN displays

Silent logging—no interference

The DATS-CANetic is an ideal solution for automotive CAN-bus applications where acoustic, vibration or other dynamic data capture and analysis is needed.

The DATS-CANetic software provides notifications of error frames and communication errors. This improves setup time and gives the user confidence before and during testing thus avoiding wasted test time. Recorded data is automatically synchronised and integrated with the Prosig data acquisition systems, and can be viewed in real time via the DATS-Acquisition software.

The DATS-CANetic hardware is a rugged, palm-sized, CAN-bus logger from Kvaser. It is ideal for applications requiring quick access to vehicle network data. The dedicated CAN-bus hardware configuration and cable design allows the user to start logging in minutes. No complex setup, file management or pinout interpretation is required. It supports CAN FD, 2.0A, CAN2.0B, and ISO1198-2 standards, and can be powered through USB. The device also includes support for SAE J1979 OBD-II PIDs which allows for easy integration with vehicle diagnostic systems. It seamlessly integrates with analog data and provides real-time CAN display, which can be very useful during troubleshooting.

For peace of mind, it has a silent logging feature which means that it does not interfere with the system it is monitoring. Additionally, the hardware is powered solely via USB, meaning there are no power requirements that could influence or effect the vehicle's electrical systems - critical for highly sensitive applications and electric vehicles.

SYSTEM

Inputs	CAN2.0A, CAN2.0B, CAN-FD
Sampling rates	CAN FD 8 Mbps CAN 2.0 1 Mbps
Communications	USB
Channels	2 or 4
Connectors	D-Sub 9

ENVIRONMENT & GENERAL

Operating temperature	-40°C to 85°C (-40°F to 185°F)
Humidity	0% - 85% (non-condensing)
Supply voltage	USB 5V
Power usage	< 2.5 W
Operational Modes	Expansion via USB, ProSync™
Dimensions (H x W x D)	25mm x 50mm x 170mm 1" x 2" x 6.7"
Weight	150g/0.33lbs



Kvaser has 40 years of leadership in embedded control, including CAN and related buses. Their open ecosystem approach allows for cooperation with top software providers, ensuring high-performance solutions with the freedom to choose. Kvaser's commitment to quality and ergonomics is evident in their products designed for real-world applications. Through the DATS-CANetic products, you can benefit from Kvaser's expertise in CAN and embedded control with high-quality, user-friendly solutions.

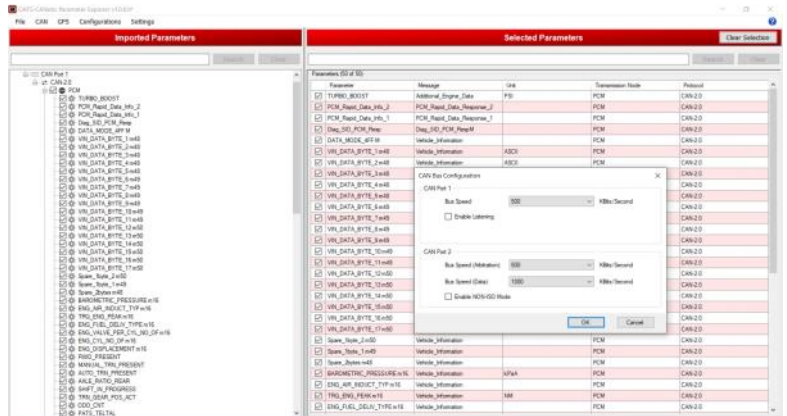
DATS-CANetic

CAN-BUS Logging System for DATS

CAN Parameter Explorer

The CAN parameter explorer allows users to import DBCfiles and then select the necessary signals to significantly streamline testing.

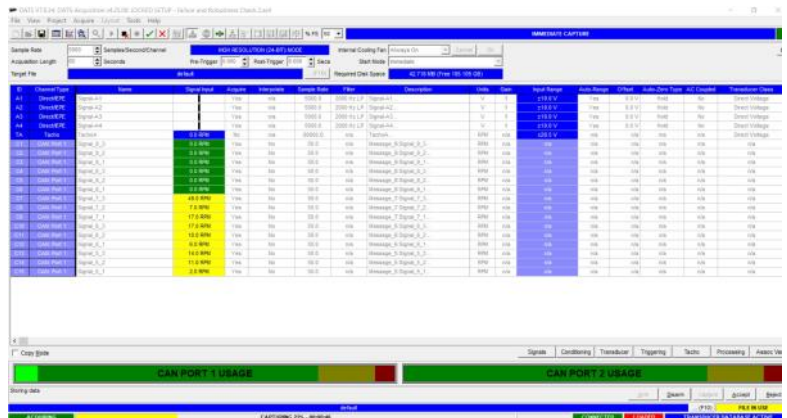
Users also have the option to import multiple protocols at the same time, with no further hardware configuration steps required. The CAN parameter explorer offers full compatibility with the Prosig high-precision GPS module.



DATS Acquisition Software Support

Seamless integration with the DATS-Acquisition software means that data capture and control is through a single software interface. Analogue, tacho, thermocouple, CAN and GPS data can be viewed together and recorded in realtime with incredibly high-precision.

This data can then be saved and exported for further examination and post-processing using DATS analysis software.



Bottom line

The **DATS - CANetic** is a flexible, robust and reliable CAN-BUS acquisition system fully compatible with **Prosig DATS** product range, that can be used together with our current acquisition systems.

Specifications may be subject to change without prior notice.

V4.03 21-Feb-2023 Copyright © Prosig Ltd



Link House, High Street
Fareham, Hampshire
PO16 7BQ
United Kingdom
sales@prosig.com



UK: +44 (0)1329 239925
USA: +1 847-228-0985
France: +33 (0)130 751507
Italy: +39 0331 178 5834

